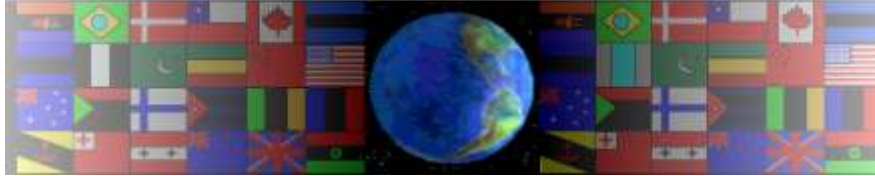


BOX GIRDER BRIDGE

V.Ryan © 2000 - 2009

On behalf of The World Association of Technology Teachers

W.A.T.T.



World Association of Technology Teachers

This exercise can be printed and used by teachers and students. It is recommended that you view the website (www.technologystudent.com) before attempting the design sheet .

THESE MATERIALS CAN BE PRINTED AND USED BY TEACHERS AND STUDENTS.
THEY MUST NOT BE EDITED IN ANY WAY OR PLACED ON ANY OTHER MEDIA INCLUDING WEB SITES AND INTRANETS.
NOT FOR COMMERCIAL USE.
THIS WORK IS PROTECTED BY COPYRIGHT LAW.
IT IS ILLEGAL TO DISPLAY THIS WORK ON ANY WEBSITE/MEDIA STORAGE OTHER THAN www.technologystudent.com

BOX GIRDER BRIDGE

V.Ryan © 2009 World Association of Technology Teachers

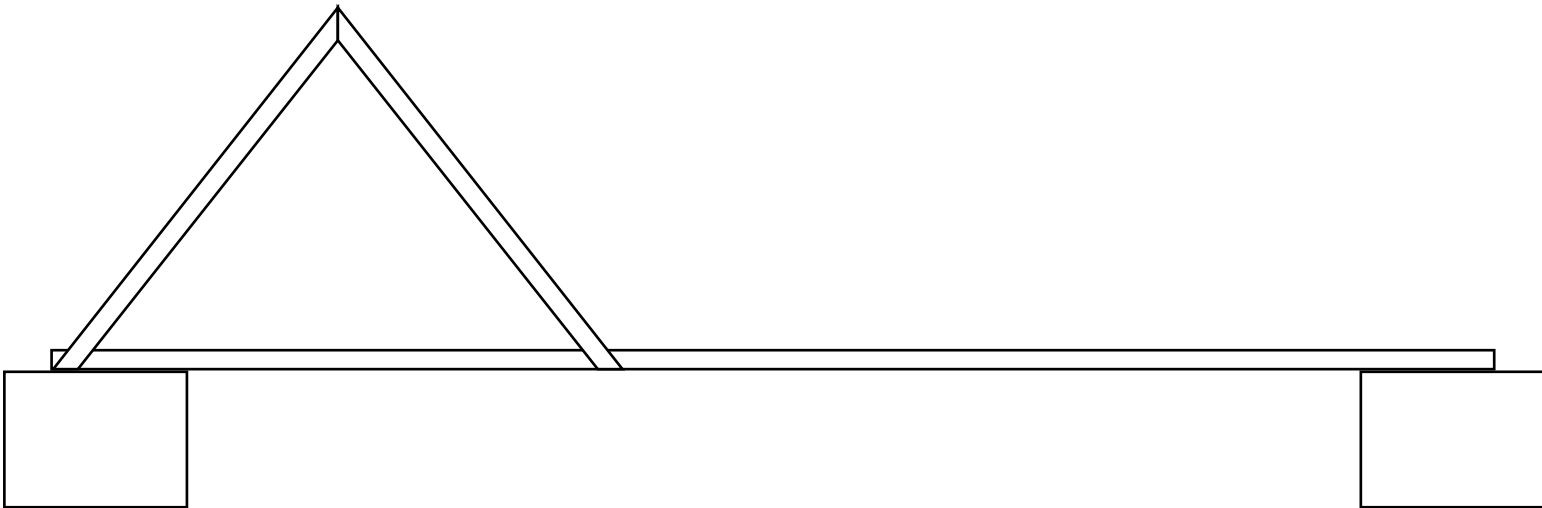
1. A description of box girder bridges is written below. Complete the paragraph by adding the missing words, in the correct places.

“Box girder bridges are quite common and they are usually manufactured from _____ steel girders. This means that the girders are _____ in a factory and _____ to the location of the bridge, where they are fixed together. One of the best examples of a prefabricated structure is the _____ _____. All its parts were manufactured in a factory, transported to _____ and then fixed together to form the worlds most famous tower.

The steel girders of a bridge are normally fixed together with large _____ and _____. Sometimes _____ are used, although these are seen on older structures”.

bolts	Eiffel Tower	nuts	manufactured	transported
	rivets	Paris	prefabricated	

2. Below is an incomplete drawing of a box girder bridge. Complete the drawing by adding the missing parts. Add appropriate colour and shade.



3. Describe the way the steel girders of a box girder bridge fixed together?

4. In the space below, sketch the joining technique you have described in question 3. Add labels and appropriate colour and shade.