

ELECTRONICS - FILAMENT BULBS

V.Ryan © 2000 - 2008

On behalf of The World Association of Technology Teachers

W.A.T.T.



World Association of Technology Teachers

This exercise can be printed and used by teachers and students. It is recommended that you view the website (www.technologystudent.com) before attempting the design sheet .

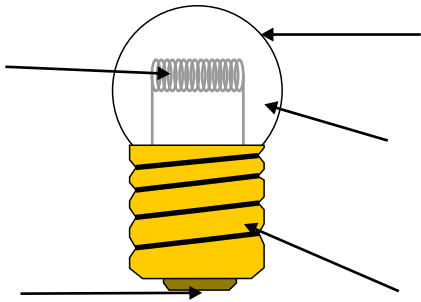
THESE MATERIALS CAN BE PRINTED AND USED BY TEACHERS AND STUDENTS.
THEY MUST NOT BE EDITED IN ANY WAY OR PLACED ON ANY OTHER MEDIA INCLUDING WEB SITES AND INTRANETS.
NOT FOR COMMERCIAL USE.
THIS WORK IS PROTECTED BY COPYRIGHT LAW.
IT IS ILLEGAL TO DISPLAY THIS WORK ON ANY WEBSITE/MEDIA STORAGE OTHER THAN www.technologystudent.com

INCANDESCENT LAMPS (BULBS)

V.Ryan © 2009 World Association of Technology Teachers

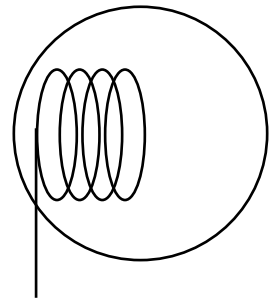
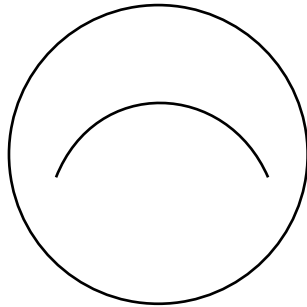
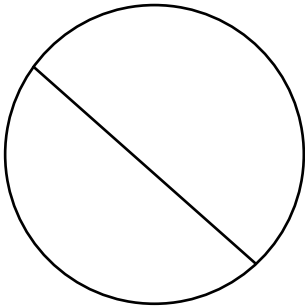
Complete the diagram of the bulb by labelling the various parts.

In the space below sketch a typical light bulb as used in a household light fitting.

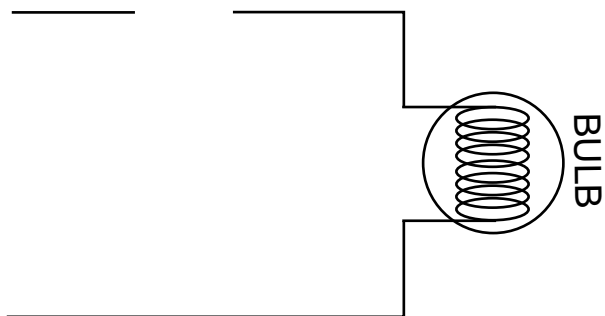


SYMBOLS

The incomplete symbols shown below all represent a bulb. Complete the symbols.



Complete the circuit below by adding a push switch and battery.



List and describe two advantages of replacing filament bulbs with LEDs.

- A. _____

- B. _____

Why are filament bulbs being replaced by low energy bulbs?
