

# EXAMINATION PREPARATION

V.Ryan © 2000 - 2009

On behalf of The World Association of Technology Teachers

# W.A.T.T.



World Association of Technology Teachers

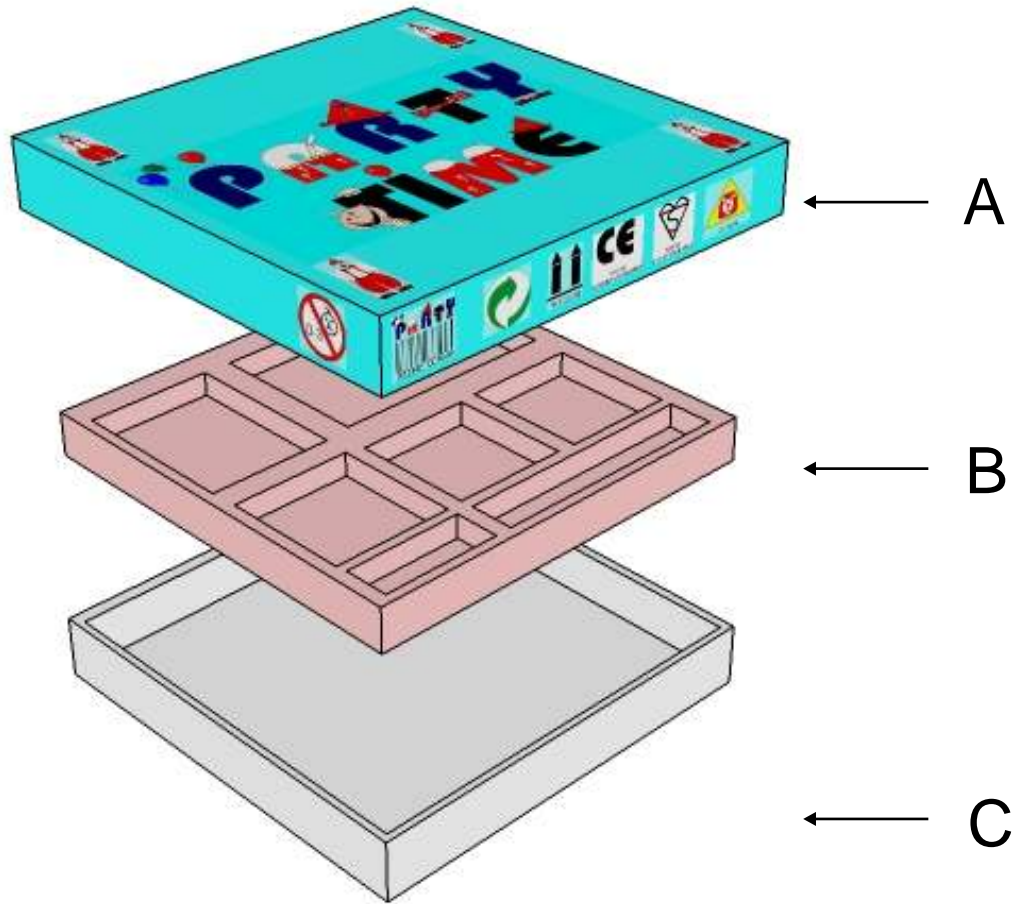
This exercise can be printed and used by teachers and students. It is recommended that you view the website ([www.technologystudent.com](http://www.technologystudent.com)) before attempting the design sheet .

THESE MATERIALS CAN BE PRINTED AND USED BY TEACHERS AND STUDENTS.  
THEY MUST NOT BE EDITED IN ANY WAY OR PLACED ON ANY OTHER MEDIA INCLUDING WEB SITES AND INTRANETS.  
NOT FOR COMMERCIAL USE.  
THIS WORK IS PROTECTED BY COPYRIGHT LAW.  
IT IS ILLEGAL TO DISPLAY THIS WORK ON ANY WEBSITE/MEDIA STORAGE OTHER THAN [www.technologystudent.com](http://www.technologystudent.com)

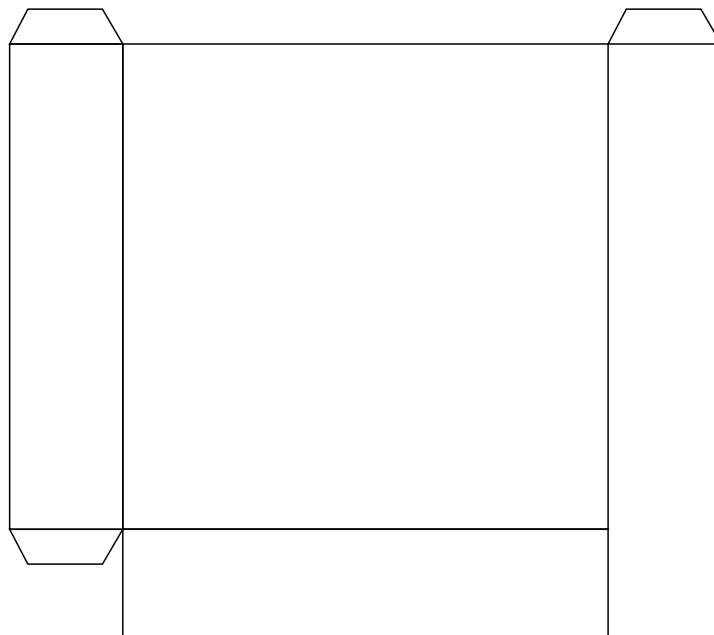
# PACKAGING QUESTION

V.Ryan © 2009 World Association of Technology Teachers

A prototype of the packaging designed for a party pack is seen below. The contents fit into part 'B'. Part 'B' then fits inside the base (part 'C'). Part 'A' is the decorative lid.



The incomplete net / development for the lid is shown below. Complete the net.



Name a suitable material for the packaging: \_\_\_\_\_

Explain why your chosen material is the most suitable.

---

---

---

---

What are the advantages/disadvantages of using this type of packaging for disposable packaging? .

---

---

---

---

