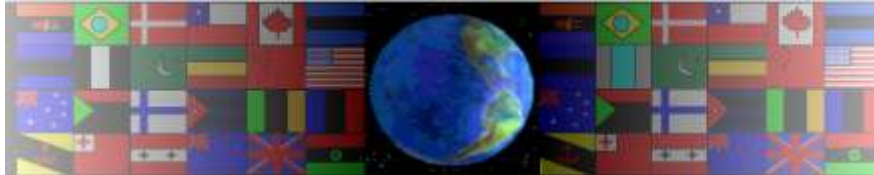


CUBOID - DEVELOPMENT / NET

V.Ryan © 2000 - 2010

On behalf of The World Association of Technology Teachers

W.A.T.T.



World Association of Technology Teachers

This exercise can be printed and used by teachers and students. It is recommended that you view the website (www.technologystudent.com) before attempting the design sheet .

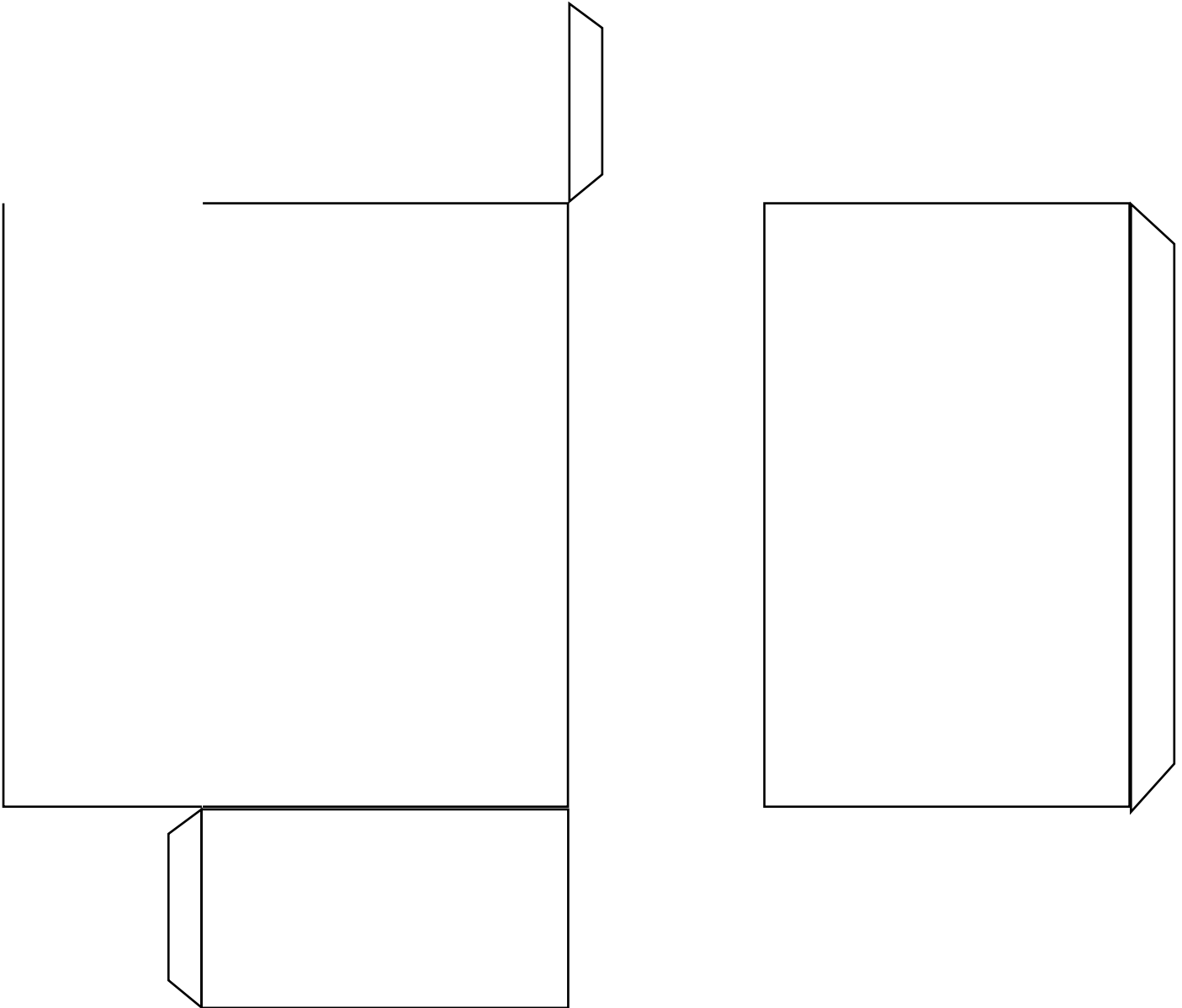
THESE MATERIALS CAN BE PRINTED AND USED BY TEACHERS AND STUDENTS.
THEY MUST NOT BE EDITED IN ANY WAY OR PLACED ON ANY OTHER MEDIA INCLUDING WEB SITES AND INTRANETS.
NOT FOR COMMERCIAL USE.
THIS WORK IS PROTECTED BY COPYRIGHT LAW.
IT IS ILLEGAL TO DISPLAY THIS WORK ON ANY WEBSITE/MEDIA STORAGE OTHER THAN www.technologystudent.com

CUBOID - DEVELOPMENT / NET

V.Ryan © 2010 World Association of Technology Teachers

1. An incomplete development / net is drawn below. Name and complete the drawing of the net.

NAME: _____



2. List a range of products that are packaged in nets / developments such as the one above.

3. Describe one advantage of using this shape of development / net to package a product.

4. What do you like or dislike about the development / net?
