

PULLEYS AND LIFTING

V.Ryan © 2000 - 2010

On behalf of The World Association of Technology Teachers

W.A.T.T.



World Association of Technology Teachers

This exercise can be printed and used by teachers and students. It is recommended that you view the website (www.technologystudent.com) before attempting the design sheet .

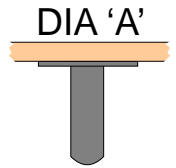
THESE MATERIALS CAN BE PRINTED AND USED BY TEACHERS AND STUDENTS.
THEY MUST NOT BE EDITED IN ANY WAY OR PLACED ON ANY OTHER MEDIA INCLUDING WEB SITES AND INTRANETS.
NOT FOR COMMERCIAL USE.
THIS WORK IS PROTECTED BY COPYRIGHT LAW.
IT IS ILLEGAL TO DISPLAY THIS WORK ON ANY WEBSITE/MEDIA STORAGE OTHER THAN www.technologystudent.com

PULLEYS AND LIFTING

V.Ryan © 2010 World Association of Technology Teachers

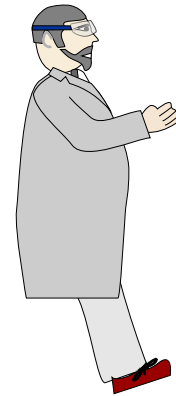
1. Why are pulley systems used?

2. An incomplete diagram (dia A) of a pulley system is drawn opposite. It is being used by a person to lift a heavy weight. Complete the diagram by adding the missing parts.



Label the LOAD and EFFORT.

3. Using a pulley system to lift heavy weights means that injury and accidents to the person operating the system, are less likely. Why is this the case?



4. The diagram of a simple pulley (below) can be compared to a lever. Add a diagram alongside the original, that clearly shows the pulley system as a lever. Add labels that indicate the EFFORT and LOAD.

