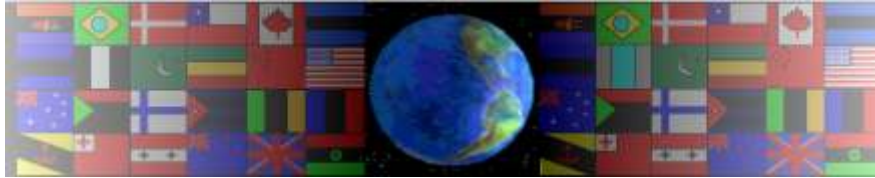


# VINYL CUTTERS

V.Ryan © 2000 - 2009

On behalf of The World Association of Technology Teachers

## W.A.T.T.



World Association of Technology Teachers

This exercise can be printed and used by teachers and students. It is recommended that you view the website ([www.technologystudent.com](http://www.technologystudent.com)) before attempting the design sheet .

THESE MATERIALS CAN BE PRINTED AND USED BY TEACHERS AND STUDENTS.  
THEY MUST NOT BE EDITED IN ANY WAY OR PLACED ON ANY OTHER MEDIA INCLUDING WEB SITES AND INTRANETS.  
NOT FOR COMMERCIAL USE.  
THIS WORK IS PROTECTED BY COPYRIGHT LAW.  
IT IS ILLEGAL TO DISPLAY THIS WORK ON ANY WEBSITE/MEDIA STORAGE OTHER THAN [www.technologystudent.com](http://www.technologystudent.com)

# VINYL CUTTERS

V.Ryan © 2009 World Association of Technology Teachers

1. Describe / explain a typical use of a Vinyl Cutter.

---

---

2. What materials can be cut on the vinyl cutter. You may wish to search the internet for suppliers of vinyl cutters and materials, to help you answer this question.

---

---

3. Name a piece of software that controls a vinyl cutter.

---

4. The computer (including software), vinyl cutter and manufactured package, can be viewed as a Systems Diagram, see below. Systems diagrams are divided into three aspects/stages - INPUT - PROCESS - OUTPUT. Complete the systems diagram below, by adding appropriate notes for each aspect/stage. The notes should describe what happens at each stage, from the design to manufacture, of a simple package.

## INPUT



---

---

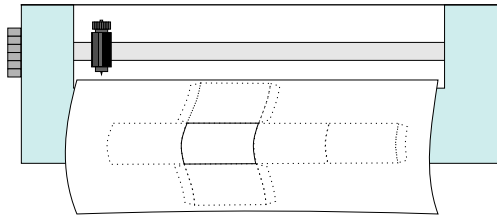
---

---

---

---

## PROCESS



---

---

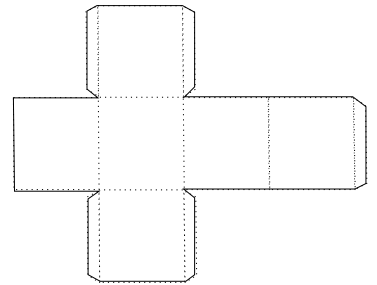
---

---

---

---

## OUTPUT



---

---

---

---

---

---

5. Vinyl cutters can be used to produce a range of manufactured products or parts of products. Describe some of these. Include a description of how these products / parts of products are used. The key words / phrases may help you answer the question.

LETTERING    PACKAGES    SYMBOLS    SHAPES    WARNING SIGNS    LABELS  
DIRECTIONAL SIGNS    DOOR SIGNS

---

---

---

---

---

---