

CUBISM - ARCHITECTURAL DESIGN

V.Ryan © 2000 - 2010

On behalf of The World Association of Technology Teachers

W.A.T.T.



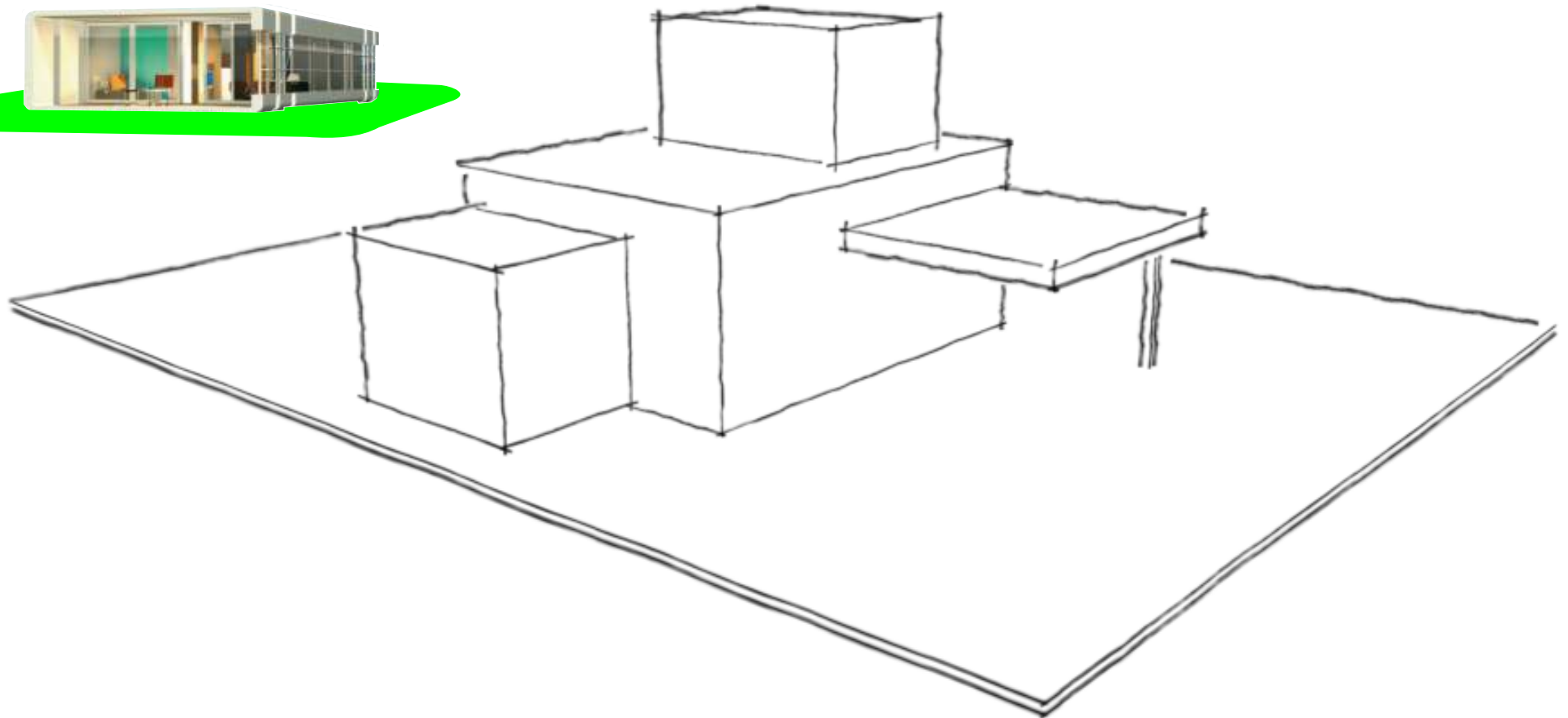
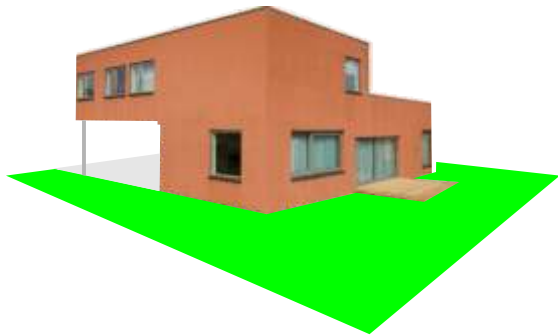
World Association of Technology Teachers

This exercise can be printed and used by teachers and students. It is recommended that you view the website (www.technologystudent.com) before attempting the design sheet .

THESE MATERIALS CAN BE PRINTED AND USED BY TEACHERS AND STUDENTS.
THEY MUST NOT BE EDITED IN ANY WAY OR PLACED ON ANY OTHER MEDIA INCLUDING WEB SITES AND INTRANETS.
NOT FOR COMMERCIAL USE.
THIS WORK IS PROTECTED BY COPYRIGHT LAW.
IT IS ILLEGAL TO DISPLAY THIS WORK ON ANY WEBSITE/MEDIA STORAGE OTHER THAN www.technologystudent.com

CUBISM - ARCHITECTURAL DESIGN

V.Ryan © 2010 World Association of Technology Teachers



Three houses designed on the principles of Cubist Architecture, are shown opposite. They are each based on a geometrical shape called a cuboid. Study their features/characteristics carefully.

Complete the design for a small family home, at the bottom of the page. The basic geometrical shape of the building has been drawn for you. Remember, the building should be designed with Cubism in mind.

Suggestion: Look at the style of the three sample buildings before adding detail to your design.