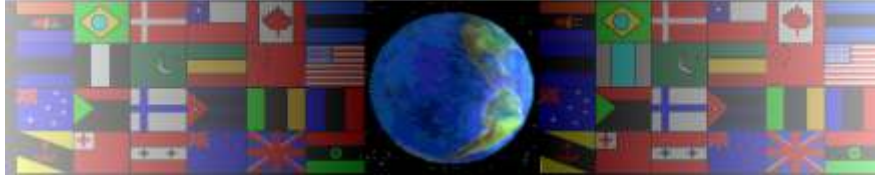


CUBOID PACKAGING - DEVELOPMENT / NET

V.Ryan © 2000 - 2012

On behalf of The World Association of Technology Teachers

W.A.T.T.



World Association of Technology Teachers

This exercise can be printed and used by teachers and students. It is recommended that you view the website (www.technologystudent.com) before attempting the design sheet .

THESE MATERIALS CAN BE PRINTED AND USED BY TEACHERS AND STUDENTS.
THEY MUST NOT BE EDITED IN ANY WAY OR PLACED ON ANY OTHER MEDIA INCLUDING WEB SITES AND INTRANETS.
NOT FOR COMMERCIAL USE.
THIS WORK IS PROTECTED BY COPYRIGHT LAW.
IT IS ILLEGAL TO DISPLAY THIS WORK ON ANY WEBSITE/MEDIA STORAGE OTHER THAN www.technologystudent.com

CUBOID PACKAGING - DEVELOPMENT / NET

V.Ryan © 2012 World Association of Technology Teachers

1. Why is a cuboid one of the most popular shapes for packaging? comment only on the key phrases below

VERY LITTLE WASTE OF MATERIAL

STRAIGHTFORWARD FOLDS AND CREASES

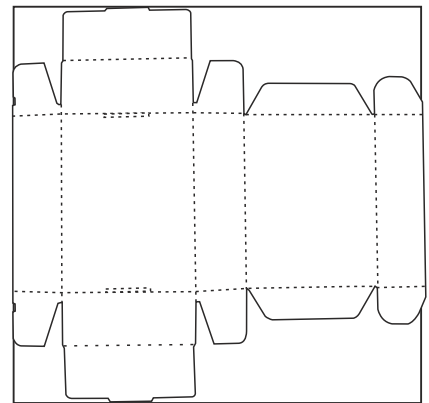
MANUFACTURED EASILY

COST OF SETTING UP EQUIPMENT AND TOOLS

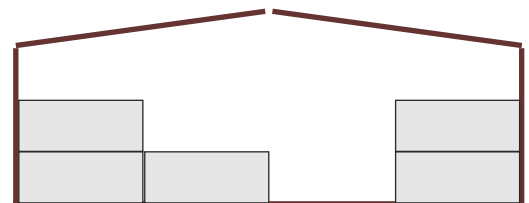
2a. The net / development of a cuboid package is shown opposite. Shade the waste material.

2b. What usually happens to the waste material?

COMPLETED NET / DEVELOPMENT



3. Packages such as the one for a perfumed product (seen opposite), are stored in large brown card boxes, for transportation to the shops. Complete the sketch showing the positioning of several packages in the brown card box, ready for transportation



SIDE VIEW OF CARDBOARD BOX

4. What are the advantages of using brown card boxes, for the storage and transportation of the packages of perfumed products?

EFFICIENT

REGULAR SHAPE

EASILY STORED

MOVED/TRANSPORTED EASILY

STACKING

NO SPACE WASTED
